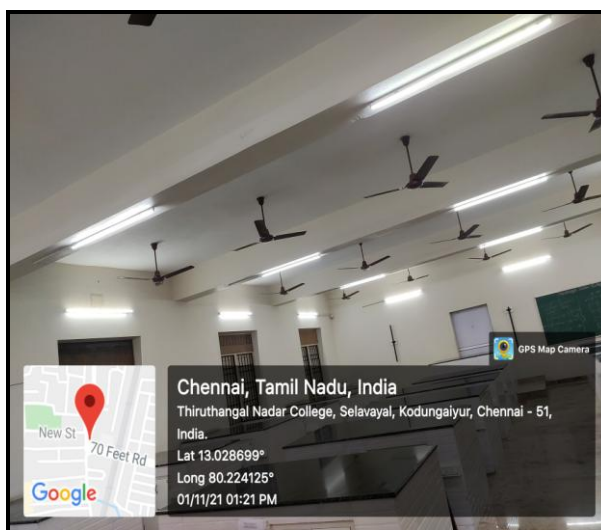




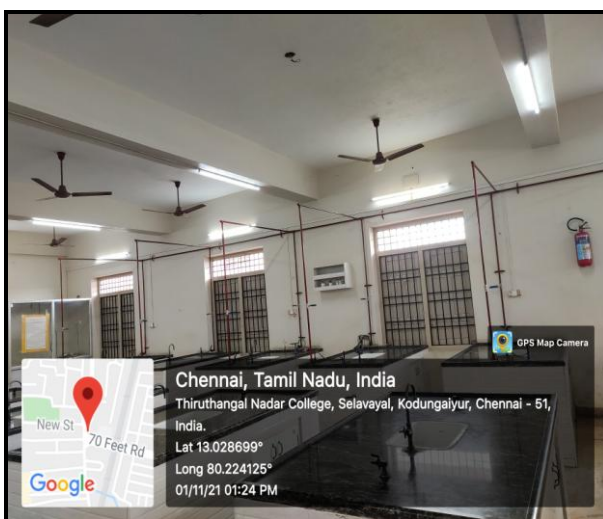
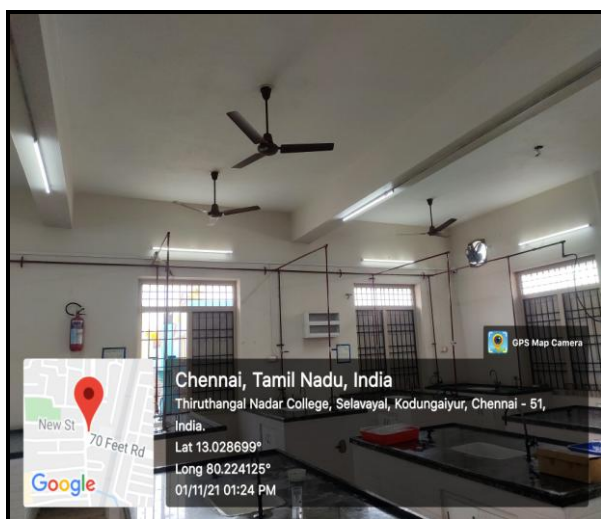
### Use of LED bulbs/ power efficient equipment:

The light-emitting diode (LED) is today's most energy-efficient and rapidly-developing lighting technology. Quality LED light bulbs last longer, are more durable, and offer comparable or better light quality than other types of lighting. LED is a highly energy-efficient lighting technology, and has the potential to fundamentally change the future of lighting. LED lights are energy-efficient, environment-friendly, produce less heat, maintenance-free, long span and durable as compared to fluorescent tube lights. LEDs are powerfully endowed with enough energy and consume up to 90% less energy than incandescent bulbs.

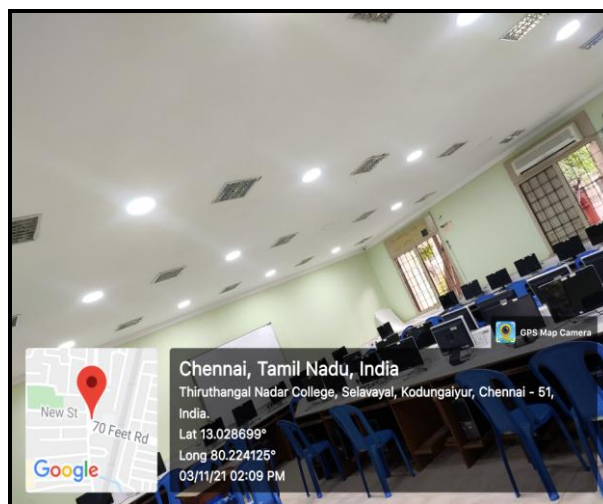
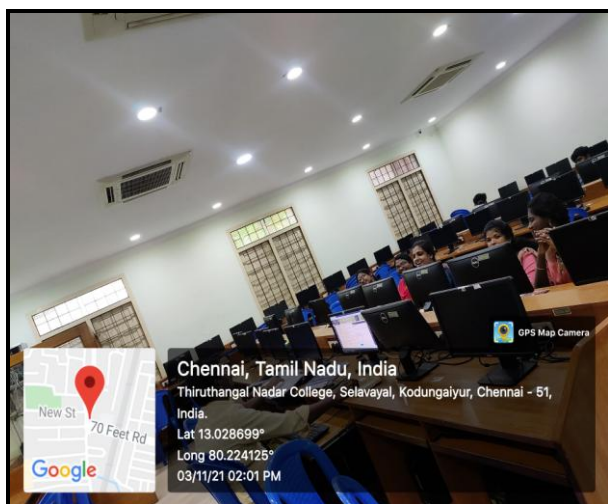
The college management has provided following facilities in conserving the energy and power efficient equipment. Master switches for each Room to shut down power of entire room when not in use. CRT monitors are replaced with LCD/LED Monitors. The CFL fittings with higher rating wattage are replaced with LED fittings with lower wattage with the same luminous level in street Lights and other possible areas of Campus. The Tube lights which are connected in college campus are not fully energy saving devices. These devices can be changed by electrical efficient appliances very soon. All the fluorescent/incandescent lights used in the campus are replaced by LED lights.



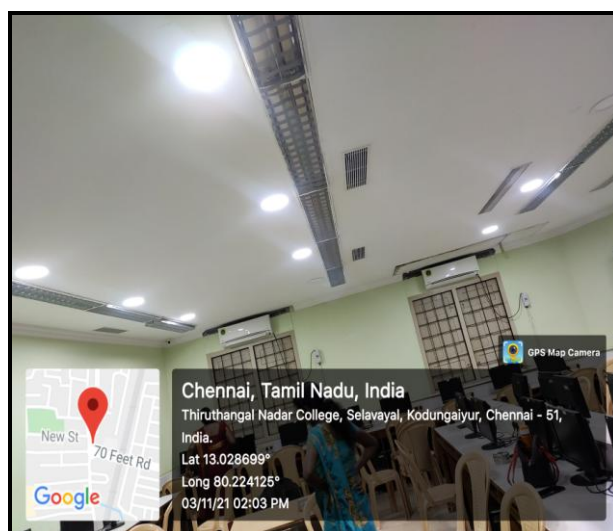
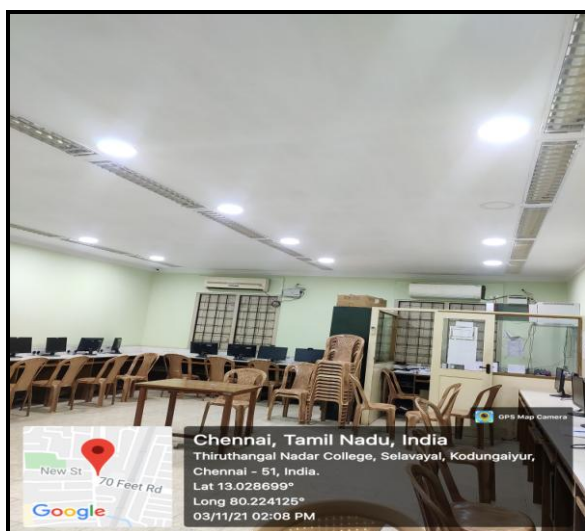
LED Bulbs in Physics Lab



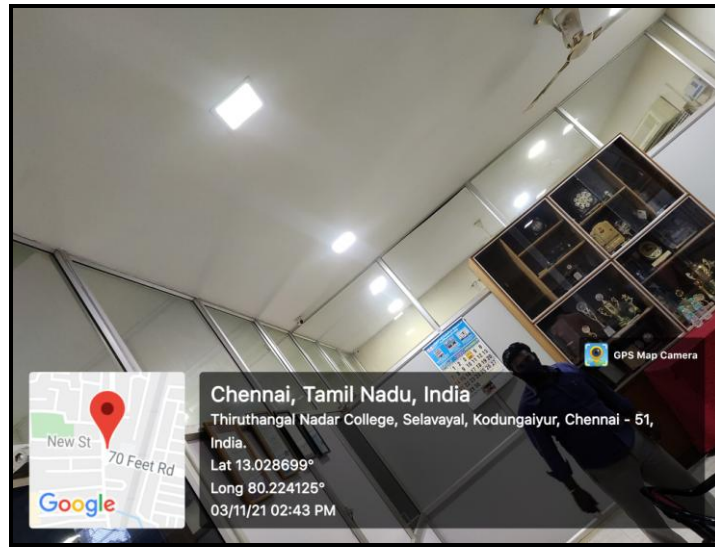
LED Bulbs in Chemistry Lab



LED Bulbs in Computer Lab



LED Bulbs in Computer Lab



**LED Bulbs in Principal's Chamber**